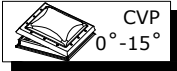


VELUX Products



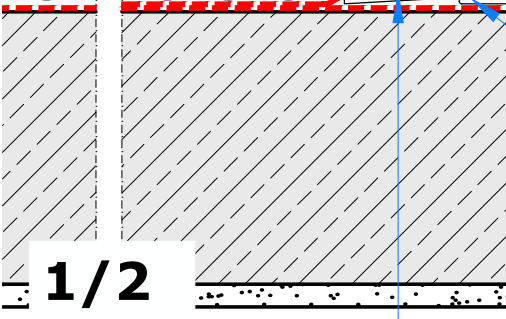
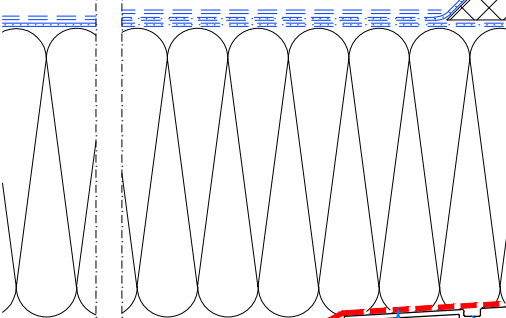
Standard dome, installation on roofs with an inclination from 0° to 15°

For green roofs, at least 50cm stipe without vegetation around the window, for example only gravel

min 50cm

>= 15cm

A



1/2



Roof vapour barrier covering the base flange

Gasket on **VELUX BBX** in window rebate, vapour-tight connection to roof vapour barrier

Extension kerb without base flange **VELUX ZCE 1015**, 15cm height, possible combination of up to three extension frames one above another (45cm from mounting base to roof window frame)

The extension kerbs are fixed to one another with screws

Silicon gap filler

Opening in the roof BxL

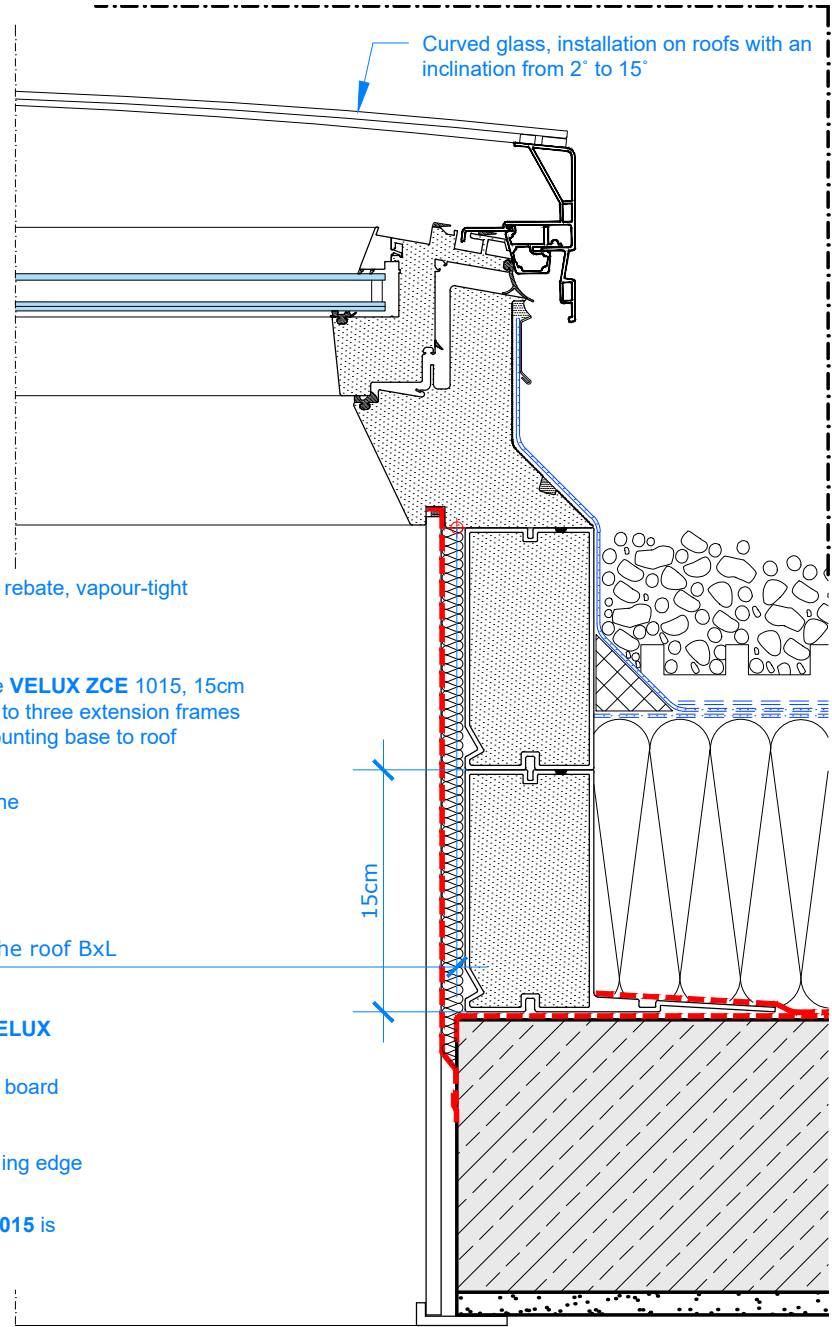
Extension kerb with base flange **VELUX ZCE 0015**

Interior finish, for example gypsum board

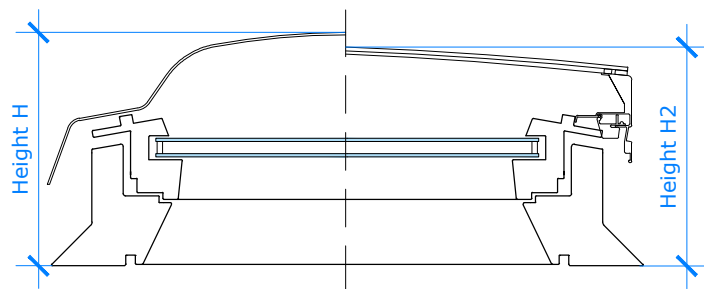
Roof vapour barrier up till the opening edge

The extension kerb **VELUX ZCE 0015** is fixed to the base with screws

Curved glass, installation on roofs with an inclination from 2° to 15°

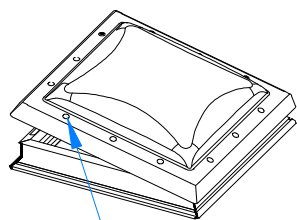


VELUX Products

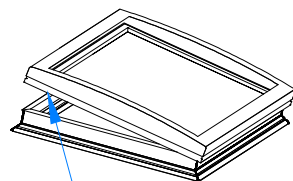


Opening in the roof, dimensions in cm

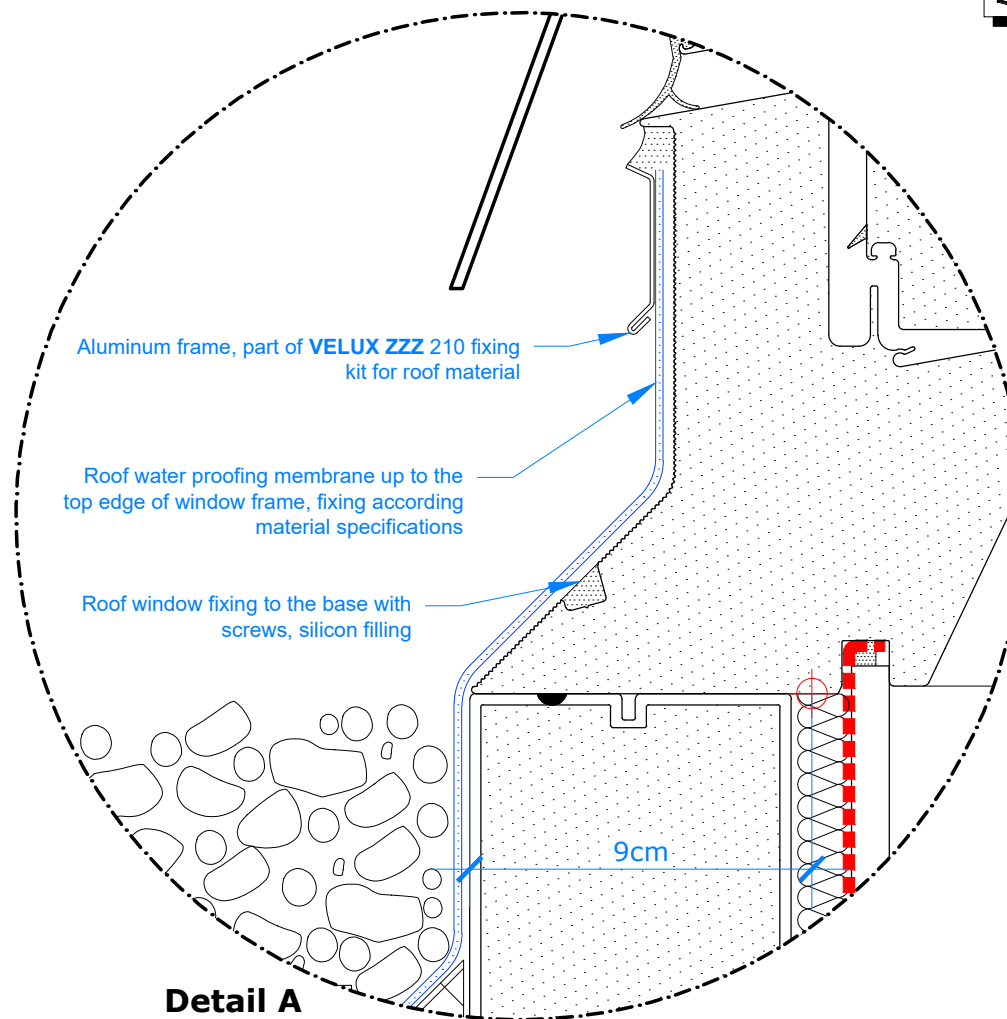
	B x L	H1 dome	H2 curved glass
060060	60 x 60	30,7	27,5
060090	60 x 90	30,7	28,7
080080	80 x 80	30,7	28,3
090090	90 x 90	35,7	28,7
090120	90 x 120	35,7	30,5
100100	100 x 100	35,7	29,2
100150	100 x 150	40,7	32,6
120120	120 x 120	40,7	30,5
150150	150 x 150	40,7	not available



Standard dome, installation on roofs with an inclination from 0° to 15°



Curved glass, installation on roofs with an inclination from 2° to 15°



Detail A
M2,5

2/2

